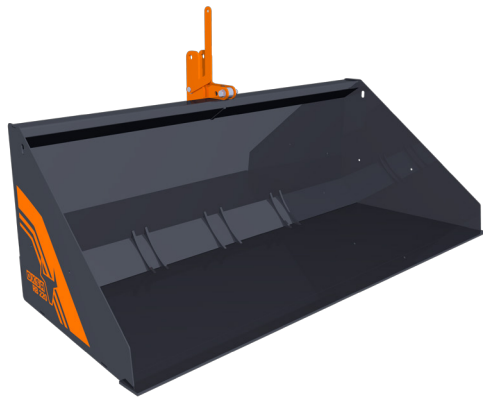




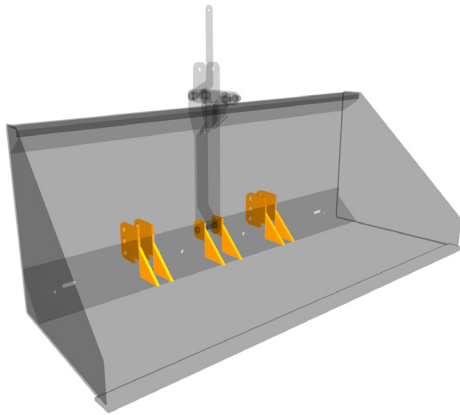
STRAIGHTENS EVEN THE CURLIEST ROADS!



RB160 | working width 1.6m
RB200 | working width 2.0m
RB220 | working width 2.2m

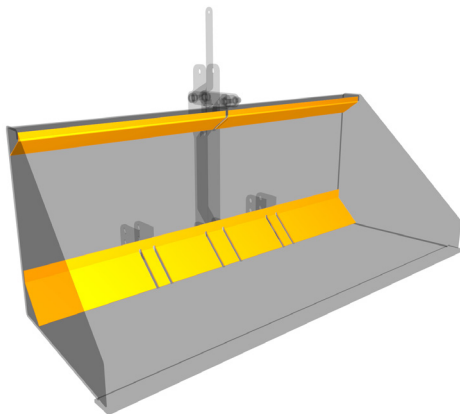
Safe and easy loading of snow, sand or gravel with OXSA Multipurpose bucket for tractor's three-point hitch.

Thanks to modern design and manufacturing process and high quality materials OXSA rear bucket can handle extreme wear and conditions. It is designed for loading sand, gravel, snow and other materials. As a three-point hitch attachment it is suitable for all kinds of tractors.



Modern design and manufacturing

Rear buckets as all other OXSA-implements are designed with modern 3D-design program. This ensures that material strengths and tensions are optimized already during the design process. OXSA products are designed with help of professional contractors and farmers who use the products in their everyday business. Another assurance of high quality design and manufacturing process is the CE-approval granted for all OXSA-products.

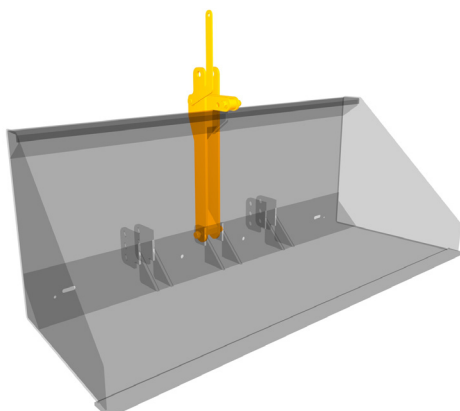


Brackets welded into inner frame structure

To guarantee strength and reliability of brackets they are not only attached into rear plate but also into inner frame. Brackets come further out from the rear plate than in traditional design which makes attaching OXSA-rear bucket into tractor easier and faster. There are 3 different attaching points for lower link pins and 2 for top link pin. Therefore OXSA-rear bucket is suitable also for smaller tractors.

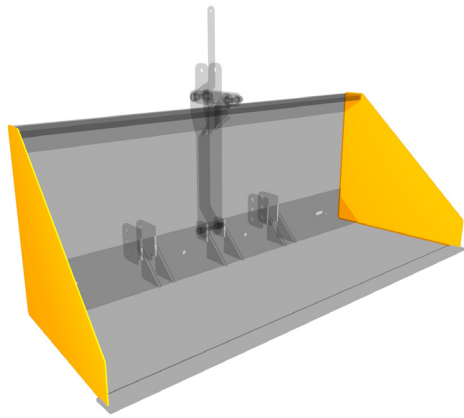
Edged and boxed structure – strength and rigidity

Edged side, rear and bottom plates enable more rigid and lighter structure. Boxing upper and lower corners with edged beams strengthens the bucket even more.



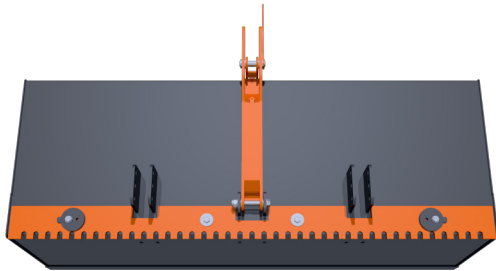
Fast, easy and safe tipping

Tipping of the load is easy and safe either by pulling directly from the release handle or with help of rope tied into the handle. Tipping can be done regardless of the position of the bucket. Accidental tipping can be avoided with a separate locking pin.



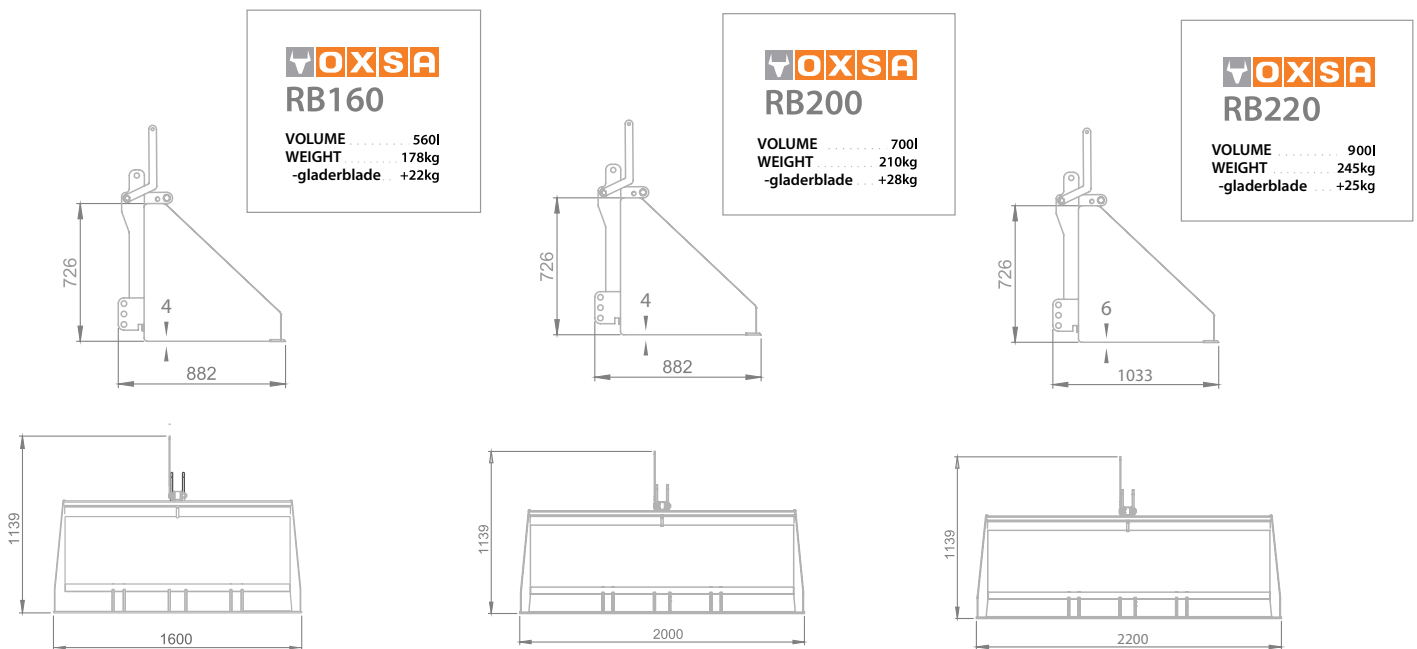
Tapered shape helps filling and emptying the bucket

Bucket's shape is tapered – it widens towards the opening. This helps filling and emptying the bucket even with the most dense soil. Boxed structure is designed to give rigidity but also to prevent soil compacting and sticking into corners.



Patented adjustable grader blade as an option

RB160 and RB200 rear buckets can be equipped with a grader blade which makes removing packed snow and ice or leveling curls from gravel road easy. This combed blade is made of HB500 high wear resistant steel (same material is used in road grader blades etc.). Blade's adjusting mechanism is designed to enable lowering it to working position in just couple of minutes and it's excentric fasteners lock the blade into it's desired position even when pressing it against road. This quick lowering and lifting mechanism of the grader blade makes for example removing packed ice from road easy and fast.



Your closest retailer www.oxsa.fi

